

Introduction..... 2
During installation 2
Starting the program 2
Start the server first..... 3
Managing accounts 4

Introduction

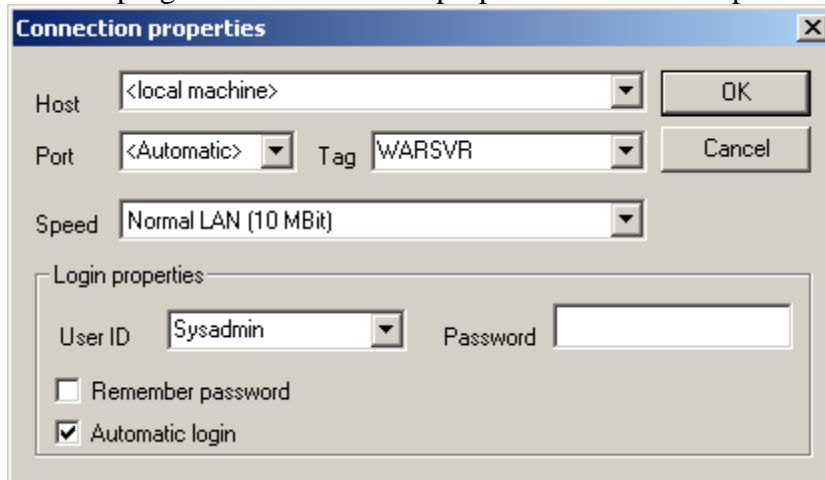
I thought I'd quickly throw this together for those less literate, like myself. I almost didn't use WARFTP because after installing it I had no idea what to do next, and found the help, shall we say... less than helpful. Hopefully this document contains a useful tip or two to get you started. It's not comprehensive, because I have a grand total of perhaps 90min as a user.

During installation

You will be prompted for a password. Remember it!

Starting the program

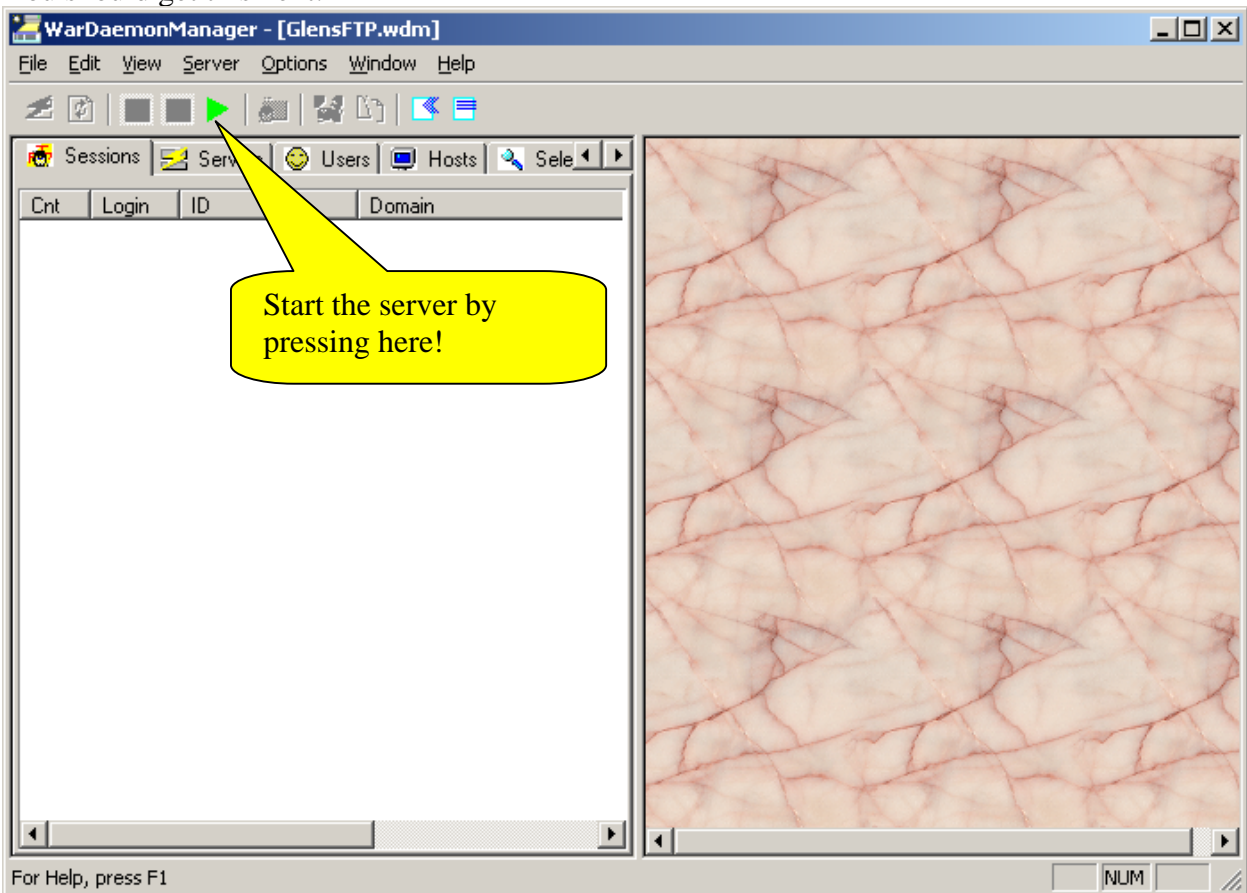
When you want to start your server, you need the password for the password box below. It doesn't seem obvious to me why you have a connection before you start the server, but when you start the program this connection properties box shows up. Put in your password and click OK.



Presumably this box would allow you to manage a server on another machine, and that's the reason for the other fields. Leaving them as above works on my Windows 2000 PC.

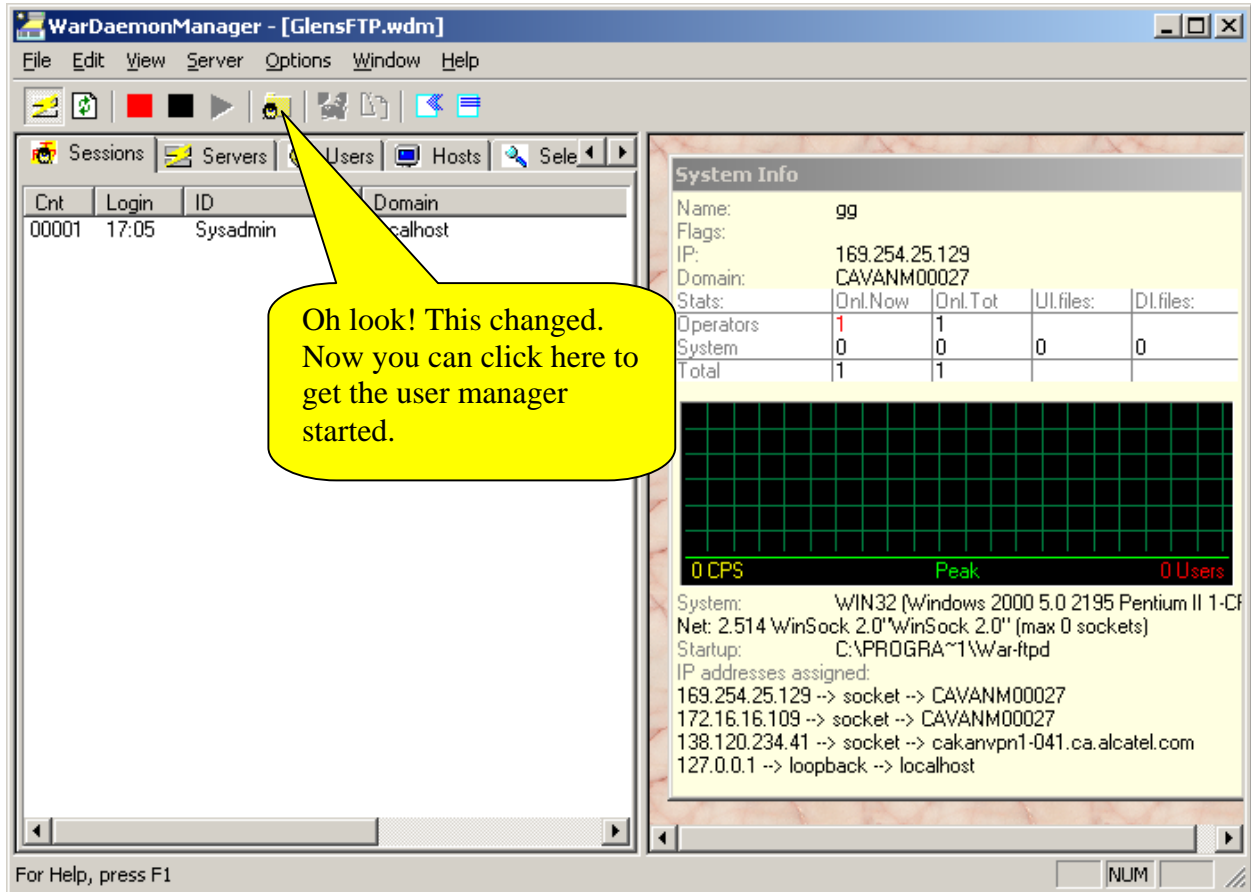
Start the server first

You should get this next:

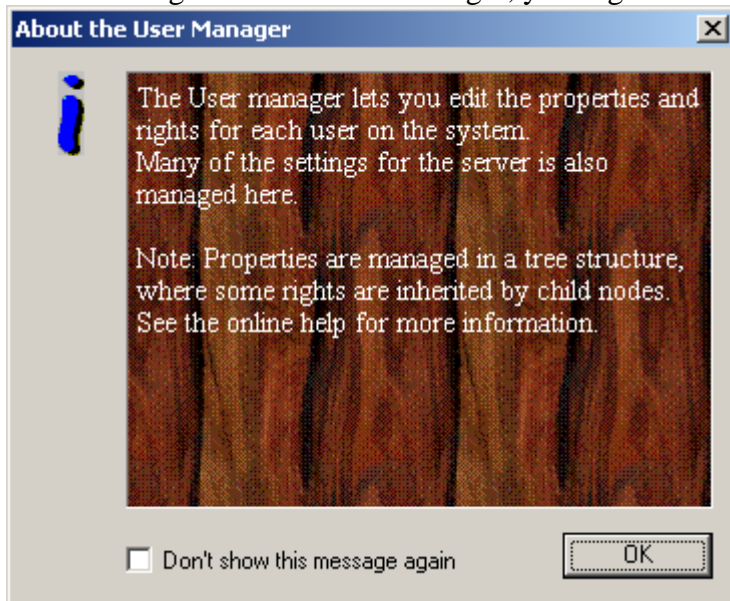


If you are like me, you thought “great” lets click on “Users” and create some accounts. After a fruitless detour through the help, I discovered that you can’t get to the user manager from here. You must start the server first. You are connected to it, but it isn’t started. That subtle little green triangle which says “start” when you move the pointer over it will do this. (it scared me the first time, “start what?” I thought). Once the server is started the screen looks like this...

Managing accounts

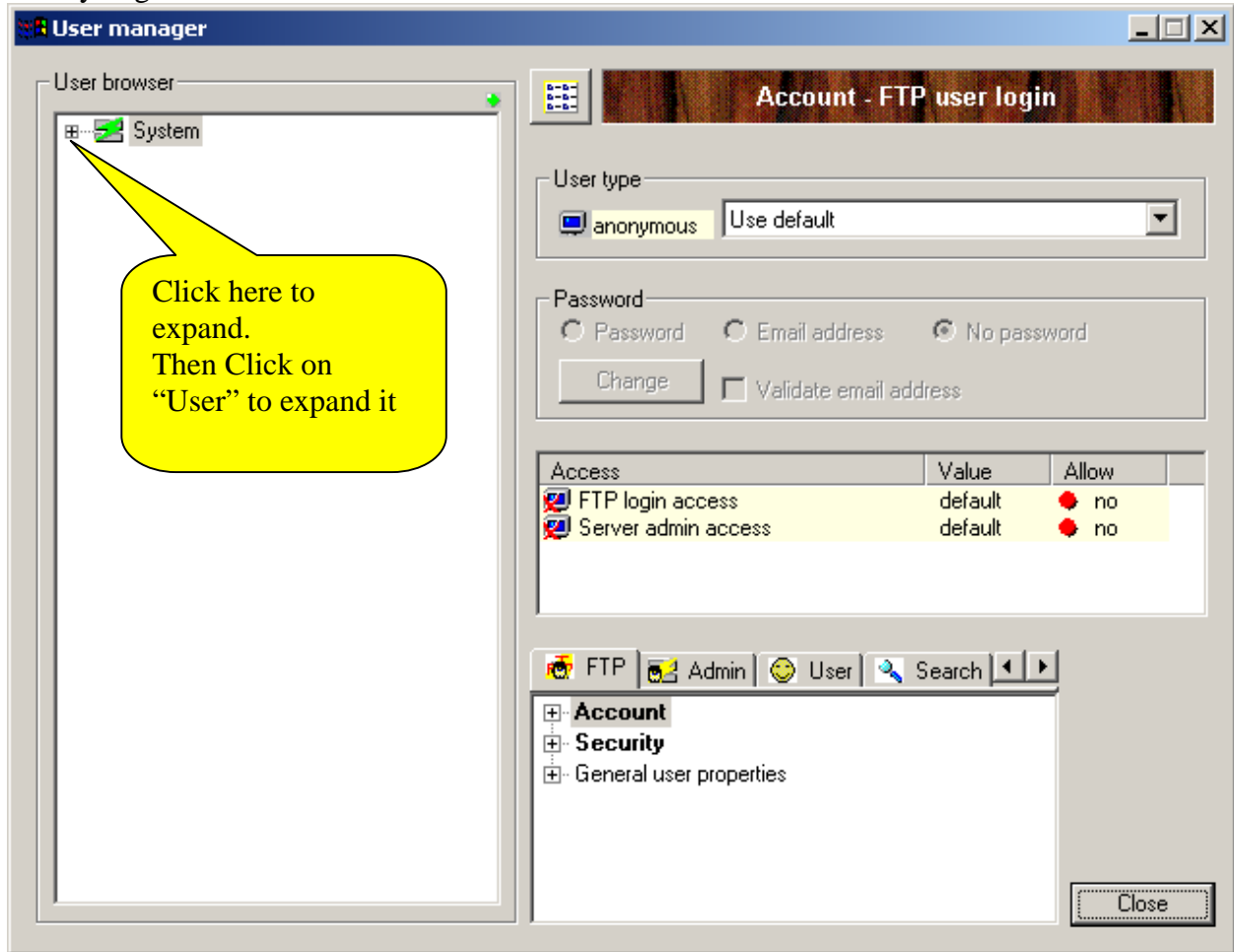


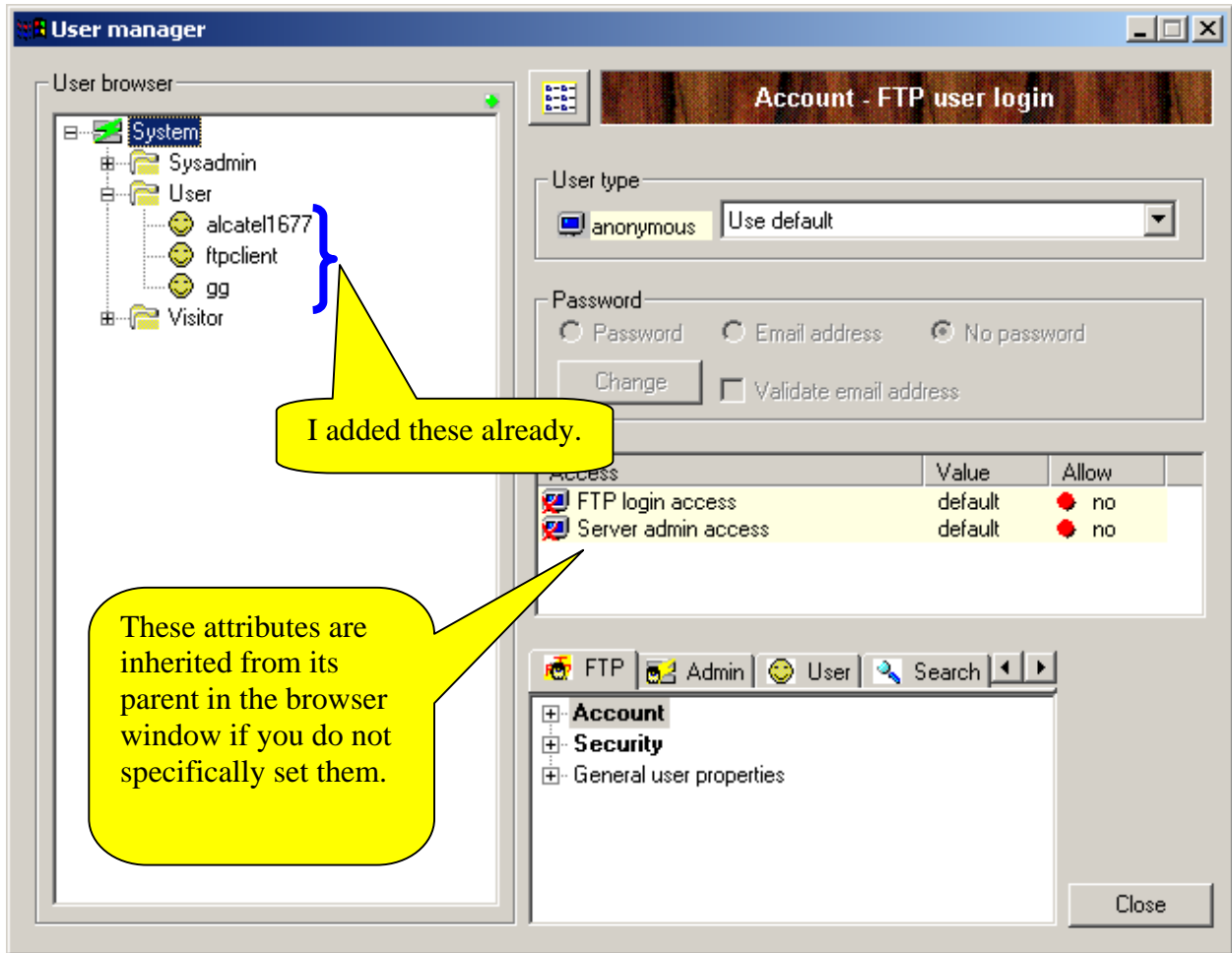
After clicking to start the user manager, you'll get:



Click “OK”

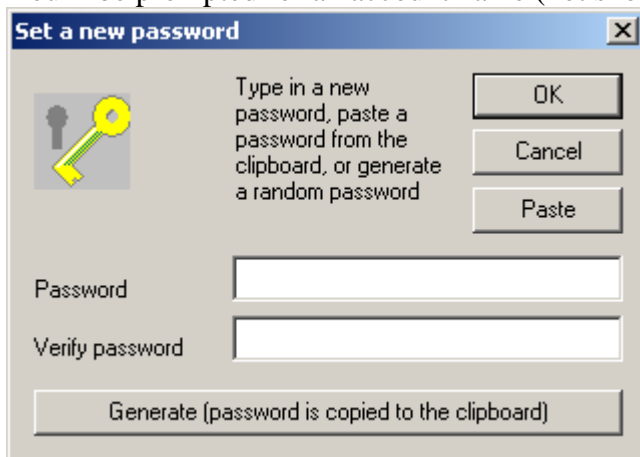
Then you get:



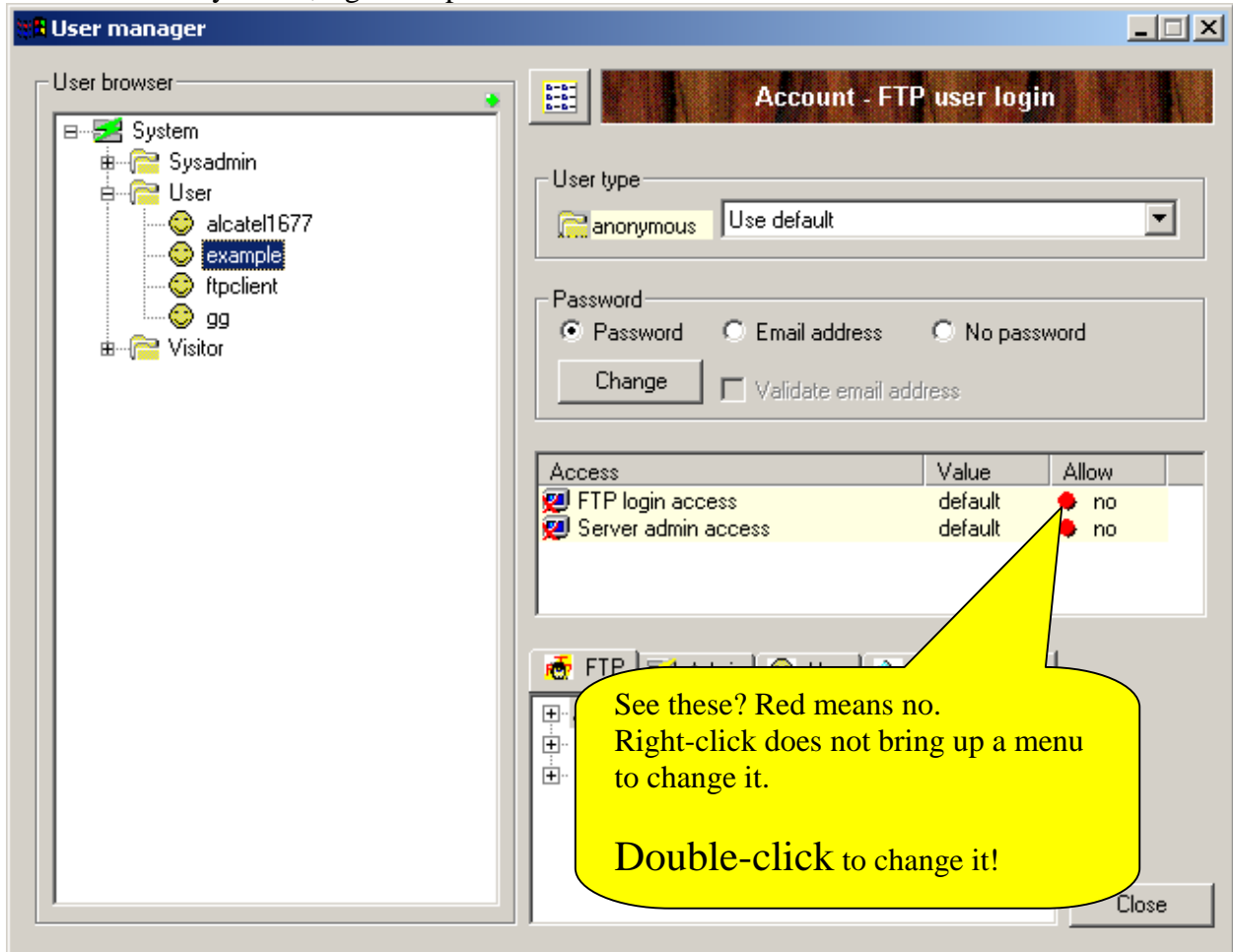


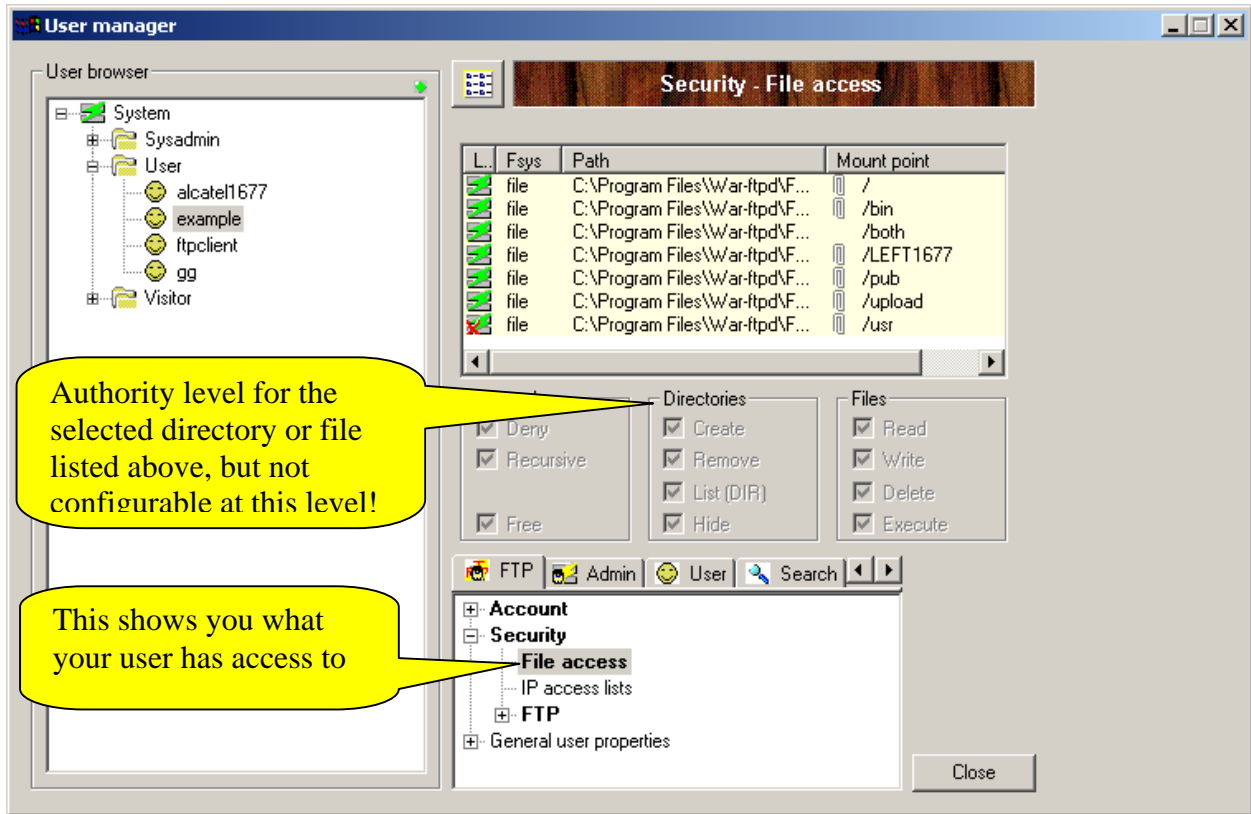
Click on “User” and then right-click and select “add user”

You’ll be prompted for an account name (not shown, I used “example”), and a password.

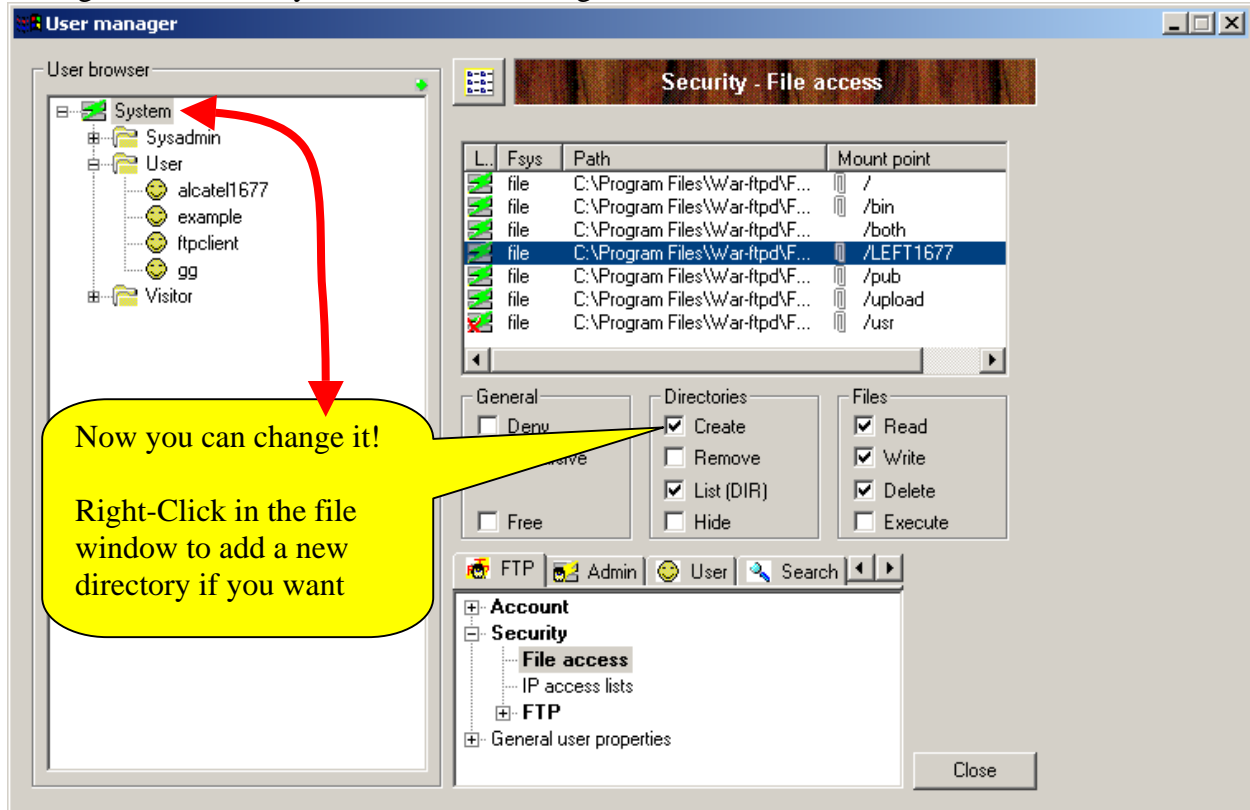


So now it's ready to use, right? Nope.





So, while there is probably a way to allow configuring the access at the user level, for a quick start, go back to the “system” level and change or add directories there:



That's enough to make you dangerous! Good Luck!
Send your appreciation to the Canadian Heart Foundation.

Glen

Shuswaprental@shaw.ca